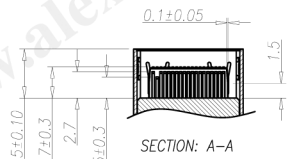
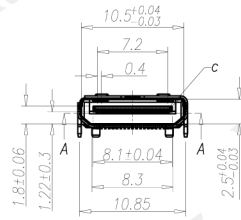


CATEGORY	DESCRIPTION	P/N #
CONNECTOR	HDMI C TYPE FEMALE 19PIN SMT TYPE	HM165F-19XL0-00MC

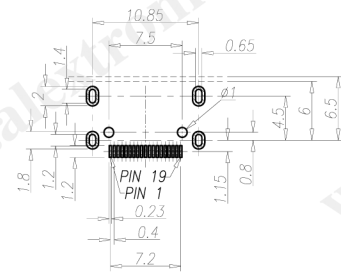
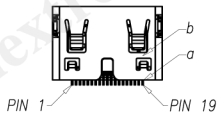
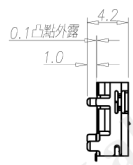
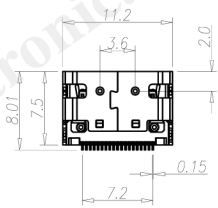
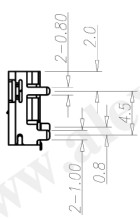
REV.	ECN NO	DESCRIPTION	REVISED	DATE
A01		New Release	Luguan	2010.02.25



HM165F-19XL0-00MC

Table 1

X	Terminal Plating
1	Contact Area: Gold Flash Plating Solder Area: Tin Plating
3	Contact Area: Au 3u" Plating Solder Area: Tin Plating
7	Contact Area: Au 15u" Plating Solder Area: Tin Plating
8	Contact Area: Au 30u" Plating Solder Area: Tin Plating



Recommend PCB Layout
(Jack Top View)
Tolerance: ±0.05mm
Recommend PCB Thickness: 0.8mm

c	Housing	1	High Temperature Thermoplastic	Black	
b	Shell	1	Copper Alloy	Ni Plating	
a	Terminal	19	Copper Alloy	See Table 1	
NO.	PART NAME	Q'TY	MATERIAL	PLATING & COLOR	Remark

UNLESS OTHERWISE SPECIFIED TOLERANCES		SCALE: 1/1	UNIT: mm		DWG.NO:
		SIZE: A3	PAGE: 1 OF 1	REV: A01	
DECIMALS:	ANGLES:	APPROVED BY		CHECKED BY	PREPARED BY
X : ±0.5	X : ±2'	XZQ		PJ	Luguan
X.X : ±0.3	X.X : ±1'				
X.XX : ±0.2		CUSTOMER COPY			